



BSW Training Hub Fellowship 2025

The BSW Training Hub is delighted to announce a new Training Hub Fellowship opportunity. This 12-month fellowship, starting in early 2025, will provide an exciting opportunity for a motivated individual to develop their knowledge and skills in leadership and education, alongside their existing role in Primary Care in BSW.

This opportunity is open to any professional group, including administrative and clinical colleagues.

For further information contact Dr Will Wallage via wwallage@nhs.net.



Post Natal Pelvic Educational Sessions

Join Rosie Cardale, Specialist Pelvic Physiotherapist, as she discusses two common postnatal issues and how we can better support postnatal mothers in primary care. These free sessions are open to all primary care staff in the South West and is suitable for Physios, Nurses, Paramedics, GP's, GP trainees, and OTs.

1) **Debunking diastasis** - the facts and myths of this postnatal problem

Wed 29 January 12:30-13:30 (online)

[Book here.](#)

2) **The 6-8 week GP check** - what to consider from a pelvic health perspective

Wed 18 February 12:30-13:30 (online)

[Book here.](#)

New ARRS Support Document Available from the Training Hub

The Training Hub can provide support and assistance to practices for many Additional Roles Reimbursement Scheme (ARRS) roles. Please see the updated [Training Hub ARRS Support document](#) which includes the benefits, training needed, practical considerations and who the Training Hub Lead is for each role. For any queries, please contact bswicb.traininghub@nhs.net.

Health Inequalities: LD Cervical Screening

Following completion of a Clinical Fellowship in the Training Hub, Dr Sarah Taylor has developed a [Toolkit](#) for primary care professionals which offers a simple guide to delivering an enhanced cervical screening service for patients with a Learning Disability (LD). In BSW 40% of this population are overdue their cervical screening. This resource supports practices to deliver a range of evidence based reasonable adjustments in order to address the health inequalities gap experienced by patients with LD.

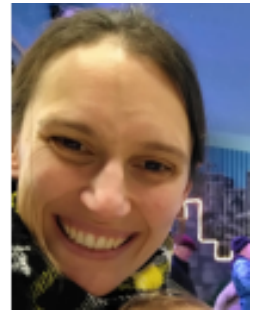
What's included in this issue: *(and more...!)*

- ✓ FOCUS ON - 5 Minute Bitesize Health Inequalities Training - Caring for Vulnerable Migrants - [page 2](#)
- ✓ Webinar: How to beat loneliness working on the frontline - [page 2](#)
- ✓ Introduction to Amy Russell - Advanced Practitioner - [page 3](#)
- ✓ Our Christmas Gifts To You... - [page 4](#)





FOCUS ON - 3 x 5 Minute Bitesize Health Inequalities Videos - Caring for Vulnerable Migrants

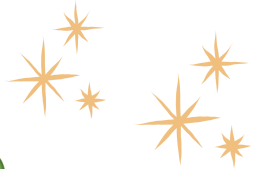


Ros Petrie
Population Health Fellow

Following completion of a Clinical Fellowship in the Training Hub, Dr Ros Petrie has produced a series of three short training videos relating to the care of vulnerable migrants.

Numbers of vulnerable migrants, including Asylum Seekers, Refugees and undocumented migrants, are increasing across BSW. Some GP practices care specifically for groups of patients in hotels, but increasingly there are higher numbers of individuals and families being housed in accommodation across towns and cities who will register with a wider number of practices.

Check out these [3 x 5 minute bitesize videos](#) which look at the context of the population group, highlight specific health needs and challenges that they face, and inform actions that both individuals and practices can take to improve care to this population group. Additional resources to support care for vulnerable migrants can also be found [here](#).



Webinar: How to beat loneliness working on the frontline



Join live monthly interactive lunchtime webinars delivered by Dr Rachel Morris (former GP, founder of Wild Monday, creator of the [Shapes Toolkit™ Training](#) and host of You Are Not A Frog Podcast) and the Wild Monday team of doctors, trainers and coaches. They focus on the REAL issues and challenges that doctors and other professionals in healthcare are facing right now and use simple, evidence-based tools to offer practical and tangible solutions.

Wednesday 11 December 12:30-13:30

Click [here](#) to register your place and see the full programme of webinars. For questions email admin@shapestoolkit.com

Principles of Primary Care CPD Course

Book now for a [one-day course](#) on 7 Feb or 25 Apr 2025, led by top experts. Explore core principles of primary care, practical solutions, and key skills to enhance healthcare delivery. Early Bird rate: £250 (ends 15 Dec). Fully-funded places available for SW professionals. Any questions - email FHLS_CPD@exeter.ac.uk

Personalised Care Corner

A space dedicated for Personalised Care Practitioners and Managers



Coffee & Connect:

An opportunity to network with colleagues in the same role or working in the same locality.

- Care Coordinators Coffee & Connect: Wednesday 4 December 12.15- 12.45
- Social Prescribers Coffee & Connect: Wednesday 4 December 13.00- 13.30

If you haven't received an invite and would like to attend, please contact: veronica.kuperman1@nhs.net

Team on TEAMS

If you would like to be added to our Teams channel, please contact: veronica.kuperman1@nhs.net

Induction and Information sessions

The Training Hub Personalised Care Lead is now offering induction and information sessions for new and existing Personalised Care colleagues and managers.

Please email veronica.kuperman1@nhs.net to book.

Welcome Packs for Learners and New Starters

Following feedback within Learning Organisation Approval (LOA) meetings and from some other conversations with practices, the Training Hub have developed the following templates: [Welcome Pack for Learners](#) and [Welcome Pack for New Starters](#), which have been pulled together from various best practice examples in BSW and beyond.

These have been designed for practices to modify and make relevant to your surgeries, or to utilise within existing documents, and are offered to you as optional guidance.

Please feel free to tailor to suit your needs and add / delete / adapt accordingly, using as much or as little as you require. The content within these welcome packs also serves as a cross reference to use as strong evidence for undergoing the LOA process.

We hope these documents are of use to you. Please do give us your feedback via rachelj.cooke@nhs.net so that we can continue to update and retain them as a resource available for all.

Introduction to Amy Russell - Advanced Practitioner

Amy is midway through a 12-month secondment with the BSW Integrated Care System (ICS) as an Advanced Practice Lead. In this role, Amy is dedicated to enhancing the Advanced Practice workforce by focusing on key areas such as workforce engagement, planning, and development. Her responsibilities include supporting existing AP's across various organisations (including Primary Care), ensuring they are aligned with NHSE benchmarks.

With her strong commitment to professional growth, Amy is focusing on providing valuable opportunities (alongside TH AP Lead Kevin Foreman securing funding), to foster AP development. She facilitates supervision opportunities for both Advanced Practitioners and their Supervisors, recognising the essential role that quality mentorship plays in promoting best practice.

Amy is passionate about encouraging collaboration among organisations to achieve consistency and efficiency across the system. By promoting joint initiatives and sharing learning, she aims to strengthen the Advanced Practice sector within BSW.

If you think it would be useful to talk to Amy about AP's and the crucial role they play; or indeed are an AP yourself and need some guidance, please do not hesitate to contact Amy via amy.russell28@nhs.net.



This Month's Wellbeing Feature - Health and Wellbeing Champions Community of Practice session: Nutrition and Hydration

27 February 2025 12:00 – 13:00 - [Book Here](#)

Following the successful launch and ongoing rollout of Health and Wellbeing Champions nationally, NHS England will deliver Community of Practice sessions to our national network of Champions, focussing on key topics to help build your knowledge and skills to provide effective support to staff.

The focus of this session will be staff nutrition and hydration, ahead of [national nutrition and hydration week](#).



Explore Resources and Networks for General Practice Nurses from the Queen's Nursing Institute

Please can we remind all GPN's of the useful resources found on the Queen's Nursing Institute via [Newsletters – The Queen's Nursing Institute](#), and in particular draw your attention to an item in the September newsletter (page 8) re the launch of a new professional network for GPN's [General Practice Nurse Network – The Queen's Nursing Institute](#). This network is free and open to all GPNs.

Next event session event is 12 Dec 2024 ~ 15:00-16:30 ~ Homeless and Inclusion Health Meeting [Homeless and Inclusion Health meeting – The Queen's Nursing Institute](#) to book.

Our £ Christmas Gifts To You...





Training Hub Team



Liz Alden
Clinical Lead
(Portfolio with GP Education)



Rachel Cooke
Projects Lead (GP Flex
Pool / Staff Survey Lead)



Hannah Cornish
GP Fellow
(Education)



Helen Edwards
Admin Lead



Tina Fear
Nursing Lead



Kevin Foreman
Lead for Apprenticeships,
AHPs, & Advanced Practice



Veronica Kuperman
Personalised Care Lead



Jim Petter
Paramedic Lead &
Workforce Planning



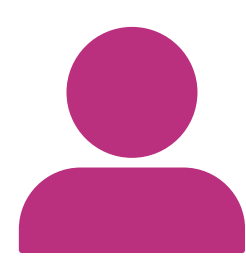
Jo Sinclair
GP NQF & GP
Retention Lead



Jacqui Simmonds
Legacy Nurse &
GPN Support



Roger Stead
Senior Project
Manager (BEMS)



Oliver Thomas
(from Jan 2025)
Inequalities Fellow
(MOU)



Will Wallage
Co-Clinical lead



Di Walsh
Training Hub
Programme Lead &
Wellbeing Lead



Vacancy
Training Hub
Fellowship 2025



Vacancy
Nurse Fellowship 2025



Website: www.bswtraininghub.nhs.uk



Email: bswicb.traininghub@nhs.net



Facebook: [@BSWGeneralPracticeJobs.nhs.uk](https://www.facebook.com/BSWGeneralPracticeJobs.nhs.uk) and [@BSWTrainingHub](https://www.facebook.com/BSWTrainingHub)



Twitter: [@BSWJobs](https://twitter.com/BSWJobs) and [@BSWTrainingHub](https://twitter.com/BSWTrainingHub)



LinkedIn: [BSW Training Hub](https://www.linkedin.com/company/BSW-Training-Hub)

