

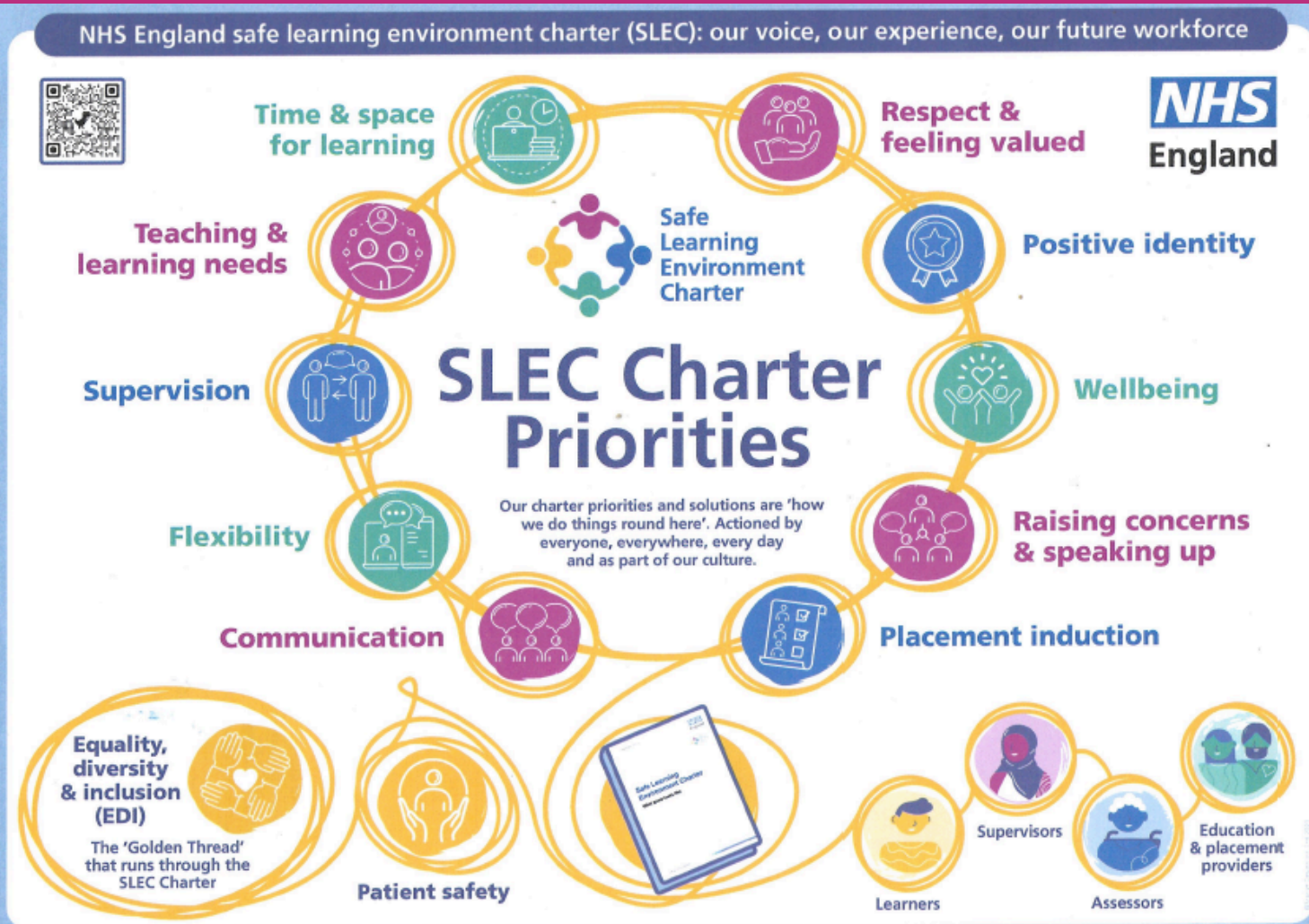


Introducing you to the NHS Safe Learning Environment Charter

As BSW practices host a variety of learners from trainees; students; and practice staff on a variety of learning programmes, it is useful to know about the NHS SLE Charter that supports the development of positive safety cultures and continuous learning across all learning environments in the NHS. You will see that the Charter covers a range of elements that work together to ensure we provide optimum learning experiences.

If you are interested in more details, please see [here](#) to access posters re each category.

Top Tip - if you are going through Learning Organisation Approval – reference to this is good evidence! 😊



What's included in this issue:

- ✓ FOCUS ON - GP Expansion - [page 2](#)
- ✓ Lunchtime Bite-Sized Equality, Diversity & Inclusion (ED&I) Training - [page 2](#)
- ✓ Join lunch and learn sessions this month to explore group clinics - [page 3](#)
- ✓ Introducing Chris Gentry - New Physician Associate Ambassador- [page 4](#)



FOCUS ON - GP Expansion



Dr Liz Alden
Clinical Lead
(Portfolio with GP
Education)

What you need to know...

Nationally under the NHS Long Term Workforce Plan there will be an increase in the number of doctors recruited to GP training. Within the whole southwest region that will mean a change from 316 doctors recruited each year to 497 (approximately a 60% expansion) over the years 2025-2031. This expansion has been mapped to population need and demographics at national level.

For us here in BSW currently this will mean a move from 63 doctors/year joining GP training within the ICB footprint to 79/year (and overall a slightly higher number of doctors each year than this joining the Bath and Swindon GP training schemes as ICB and GP training patch geographies are not quite contiguous).

The GP post capacity we will need to host them in BSW is more than these headline numbers however due to a combination of factors including:

- the shift in 3-year GP training schemes to 12 months in hospital posts, and 24 months in GP, community, and integrated training posts
- the increasing move to less than full time working in recent years
- the average length of actual GP training rising (now 3 years 9 months)

Taking into account the above BSW ICB footprint expansion in GP training numbers from 63 to 79 a year is likely to need a **projected increase in overall GP placements within BSW from 170 to 214!**

Given the general pressures including but not limited to estates this represents a challenge, and something that is often discussed by practices at PCN Learning Organisation Approval visits.

The BSW Training Hub and the respective GP Associate Deans for Bath and Swindon training schemes are engaging with the wider system to highlight this upcoming expansion in GP training and the projected increase in GP posts needed within the BSW footprint.

What you need to do...

If you are a practice interested in GP training, or an existing GP training practice that may be able to expand your training numbers please get in touch with the [Training Hub](#) or the respective Associate Deans for Bath (alison.hutchings2@nhs.net) or Swindon (elizabeth.alden2@nhs.net). We would love to hear from you.

Lunchtime Bite-Sized Equality, Diversity & Inclusion (ED&I) Training

What: Episode 5: Introduction to Differential Attainment in Medical Education

When: Wednesday 27th November 2024, 12:30pm – 1:00pm

Who: Dr Silvana Romero-Brown, GP&TPD (ED&I & DA), South West

Whom: For BSW Multidisciplinary Primary Care Professionals

Where: MS Teams - [JOIN HERE](#)

Meeting ID: 340 597 209 220

Passcode: uCekCw

Check out [this page](#) to access recordings of the previous ED&I sessions which cover Promoting Inclusion and Valuing Diversity, Unconscious Bias, Neurodivergence and the NHS, ED&I and Staff Experience.

BSW PRIMARY AND COMMUNITY CARE
TRAINING HUB **SEASON FINALE!!**
presents
Lunchtime
Bite-Size
30-minute Online ED&I Training Events
EPISODE 5: INTRODUCTION TO DIFFERENTIAL ATTAINMENT IN MEDICAL EDUCATION
DATE: WEDNESDAY, 27TH NOVEMBER 2024
TIME: 12:30 PM - 1:00 PM
TEAMS MEETING ID: 340 597 209 220
Passcode: uCekCw
GUEST: DR SILVANA ROMERO-BROWN, GP & TPD (ED&I & DA), SOUTHWEST
FOR: ALL MULTIDISCIPLINARY PRIMARY CARE PROFESSIONALS
ORGANISED BY: ISAAC FRANK, ED&I FELLOW, BSW TH
IFRANK@NHS.NET TO BOOK
OR JOIN USING ABOVE TEAMS ID

Join lunch and learn sessions this month to explore group clinics

Masterclass: Getting Going with Group Clinics

Thursday, 7 November, 12:45 – 14:15

Join Dr. Rupa Joshi from the British Society of Lifestyle Medicine and NHSE's Primary Care Medical Directorate Lead for insights on making the case for group clinics. Previous attendees called it "inspirational" and praised the practical, reassuring advice.

Supporting People with Persistent Symptoms in Group Primary Care

Thursday, 28 November, 12:30 – 13:30

Learn how a primary care team collaborated with a local community trust to support people living with symptoms like fatigue and chronic pain, reducing GP surgery attendance by 50%.

Catch Up on Respiratory QOF Success

Watch the October webinar on scaling group clinics and the impressive results teams have achieved. [Watch here.](#)

Book Your Free Spot: [Reserve your place here.](#)

Masterclass: getting going with group clinics

Are you struggling to persuade colleagues about the benefits of group clinics and to make the case for funding for team training?

Use the QR code to book your free group clinic masterclass with Georgina Craig, ELC and Dr Rupa Joshi, NHS England's Primary Care Medical Directorate Lead for Group Clinics and an experienced practitioner:

Tuesday 15 October / 12:45 – 14:15
or Thursday 07 November / 12:45 – 14:15

Follow the link to book your masterclass
<https://www.elcworks.co.uk/free-lunch-and-learn-webinars/>

Read case studies and access free resources:
elcworks.co.uk

Knowledge and Library Services

All Primary Care staff are eligible to use the high-quality knowledge and evidence resources, services, tools and databases accessible via the [NHS Knowledge and Library Hub](#).

They can be accessed using [NHS OpenAthens](#) (either sign in or register) or through your local [NHS Health library](#).

More information on what's available for Primary Care staff can be found [here](#) along with [promotional material](#).

Knowledge and Library Services for GPs and practice teams

NHS Knowledge and Library Services can give you access to the most up to date and trusted evidence and information in healthcare today, enabling high quality decision making, professional development, research and innovation to achieve health improvement across England, locally, regionally and nationally.

NHS OpenAthens
Before you start, you need an NHS OpenAthens account to take full advantage of all these tools and resources. If you have forgotten your login or need an account [register now!](#) Or watch our video guide on how to [register](#).

Finding information in one place
The [NHS Knowledge and Library Hub](#) has thousands of journals, e-books, guidelines, medical databases, clinical decision support tools and providing up to date, trusted evidence and information – all online and in one place. Resources include:
NICE Clinical Knowledge Summaries over 370 topics covered in accessible summaries particularly geared towards primary care practitioners.
Maudsley Prescribing Guidelines is the essential evidence-based prescribing guidelines on the safe and effective prescribing of psychotropic agents.
Royal Marsden Manual of Clinical Nursing Procedures the 'gold standard' for nursing with 350 evidence-based clinical procedures related to every aspect of care.
All these resources are NHS funded so free to staff and trainees in England. [Start your search](#), read the [FAQs](#) for help or watch our [short YouTube guide](#).

Tools and support at your fingertips
BMJ Best Practice
The national clinical decision support tool is available on desktop or app, drawing on the latest evidence-based research with step-by-step guidance on diagnosis, prognosis, treatment and prevention.
QUP handbooks and textbooks
All NHS staff and students on placement have access to over 130 Oxford Medicine e-books, including over 15 titles for GP and practice teams such as:
• Emergencies in Primary Care
• Oxford Handbook of Clinical Diagnosis
• Oxford Handbook of General Practice
• Oxford Handbook of Primary Care and Community Nursing
• Oxford Textbook of Community Mental Health
• Oxford Textbook of Medicine

Funded by Health Education England for NHS staff, trainees, students and learners throughout their career

This Month's Wellbeing Feature - Supporting our NHS People

See what's available for NHS People [NHS England » Supporting our NHS people](#)

Text 8528 for 24/7 support [NHS England » Support available for our NHS people](#)

Re-look at the current wellbeing Apps on offer [NHS England » Wellbeing apps](#)

Explore the self-assessment tool [Check my wellbeing – Self-assess your psychological and emotional wellbeing](#)

Specific information is available i.e. for colleagues affected by sexual misconduct [NHS England » Supporting colleagues affected by sexual misconduct](#)

Say something to someone, no matter how difficult. We've got you!





GP Assistant Programme - Limited Spaces Available

Key Facts:

- Level 4 qualification (equivalent to Foundation Degree)
- 9-month programme
- One day per week off the job learning support
- GP Mentor required to sign off work (other mentors can be used for support)
- A funded programme £2,120 will be paid directly to the GP practice
- Supports staff retention & development
- Flexible role proven to improve access & streamline workflow.

For any queries, please contact devon.traininghub@nhs.net

How to apply:

1. Practice manager needs to complete the first page of the form (one form per applicant) press submit. This sends an email to the GP Assistant asking them to complete the next step.
2. GP assistant completes their information and submits the form. This sends an email to the GP Mentor.
3. The GP mentor completes their section and submits the form.
4. The application is received by Devon Training Hub for checking and approval. Acceptance on to the programme happens once the closing date for applications has been received.

Application link:

<https://remote.ipegas.co.uk/webforms/NDE4MDU=>

Introducing Chris Gentry: New Physician Associate Ambassador, Primary Care, South West

The Training Hub is pleased to introduce Chris Gentry as the new Physician Associate (PA) Ambassador for Primary Care in the South West of England. Chris will be focusing on several key areas to support and develop the PA workforce in primary care settings:

- **Workforce Engagement:** Advocating for the PA role, ensuring their contributions are recognized and their voices heard within primary care.
- **Supporting Qualified PAs:** Providing resources and guidance for current PAs, helping them navigate career paths and professional development opportunities.
- **University Engagement:** Building partnerships with local universities to guide and support students interested in pursuing a career in primary care.
- **Creating Job Opportunities:** Identifying and developing new job placements for both students and newly qualified PAs.
- **Encouraging Preceptorship:** Promoting preceptorship opportunities to support the transition from education to practice, enhancing the skills and confidence of new PAs.

If you need Mental Health PA support, you can contact:

- Rachel Burghes – Mental Health Ambassador SW: rachel.burghes@nhs.net

For any questions or to discuss initiatives that can benefit the PA workforce, please feel free to reach out to Chris at christopher.gentry@nhs.net.

Personalised Care Corner

Induction and Information sessions

The Training Hub Personalised Care Lead is offering induction and information sessions for new and existing Personalised Care colleagues and managers.

Please email veronica.kuperman1@nhs.net to book.



Training Hub Team



Liz Alden
Clinical Lead
(Portfolio with GP Education)



Rachel Cooke
Projects Lead (GP Flex
Pool / Staff Survey Lead)



Hannah Cornish
GP Fellow
(Education)



Helen Edwards
Admin Lead



Tina Fear
Nursing Lead



Kevin Foreman
Lead for Apprenticeships,
AHPs, & Advanced Practice



Isaac Frank
Near Peer GP Fellow



Veronica Kuperman
Personalised Care Lead



Jim Petter
Paramedic Lead &
Workforce Planning



Jo Sinclair
GP NQF & GP
Retention Lead



Jacqui Simmonds
Legacy Nurse &
GPN Support



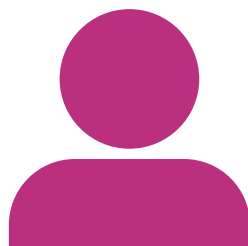
Roger Stead
Senior Project
Manager (BEMS)



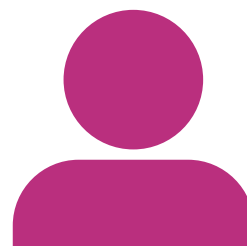
Will Wallage
Co-Clinical lead



Di Walsh
Training Hub
Programme Lead &
Wellbeing Lead



Vacancy
Nurse Fellow



Vacancy
Fellowship



Website: www.bswtraininghub.nhs.uk



Email: bswicb.traininghub@nhs.net



Facebook: [@BSWGeneralPracticeJobs.nhs.uk](https://www.facebook.com/BSWGeneralPracticeJobs.nhs.uk) and [@BSWTrainingHub](https://www.facebook.com/BSWTrainingHub)



Twitter: [@BSWJobs](https://twitter.com/BSWJobs) and [@BSWTrainingHub](https://twitter.com/BSWTrainingHub)



LinkedIn: [BSW Training Hub](https://www.linkedin.com/company/BSW-Training-Hub)

