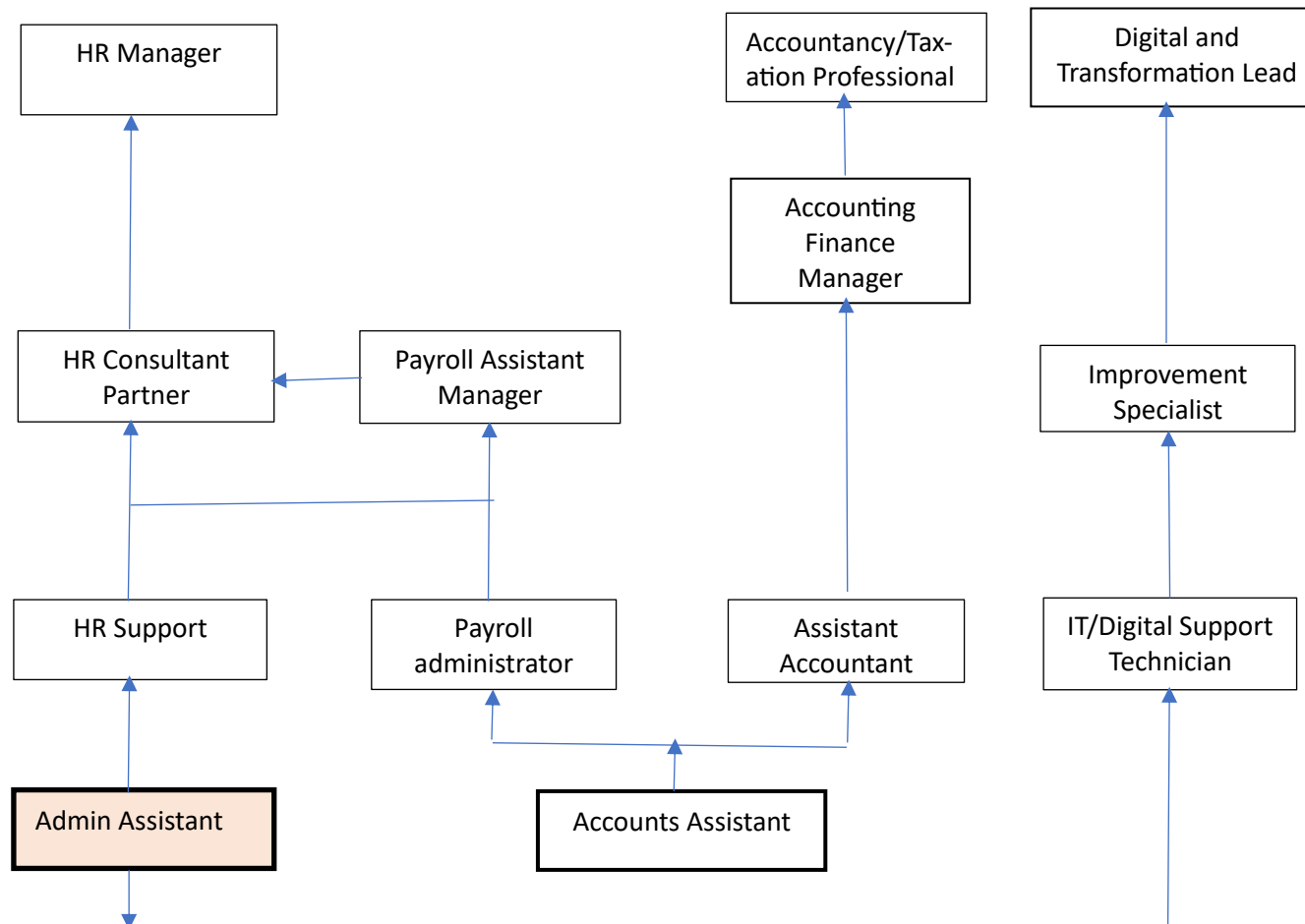


Career pathway for support staff (HR, finance and IT) working in primary care



Relevant courses/ apprenticeships

Nye-bevan-programme/
Elizabeth-garrett-anderson-programme
[Senior leader \(level 7\)*](#)
[Rosalind Franklin Programme – Leadership Academy^](#)
[Mary Seacole programme – Leadership Academy](#)
[Edward Jenner programme – Leadership Academy^](#)

Accountancy/Taxation Professional (level 7)
Senior People Professional (level 7)

[Accounting finance manager \(level 6\)*](#)
Digital and Technology Solutions Professional (level 6)

[Payroll assistant manager \(level 5\)*](#)
[HR consultant partner \(level 5\)*](#)
[Improvement specialist \(level 5\)*](#)

[Improvement practitioner \(level 4\)*](#)
Data Analyst (level 4)
Business Analyst (level 4)

[Customer service specialist \(level 3\)*](#)
[HR support \(level 3\)*](#)
[Payroll administrator \(level 3\)*](#)
[Assistant accountant \(level 3\)*](#)
Data Technician (level 3)
IT Solutions Technician (level 3)
Digital Support Technician (level 3)

Customer Service Practitioner (level 2)
[Accounts or finance assistant \(level 2\)*](#)