

Newsletter

July 2023



The BSW ORCHA App library site

5th July 1300 - 1345hrs

We would like to invite you to attend an introduction and refresher Lunch and Learn session. Please click the link below to access the session via Teams and add this to your calendar. [Click here to join the meeting](#)

Roadmap Supervision Training Sessions

18th and 19th July 0930 - 1530hrs

There are spaces on this upcoming 2-day virtual training. Please use the [booking form](#) link to confirm your space.

Skills for Life National Webinar

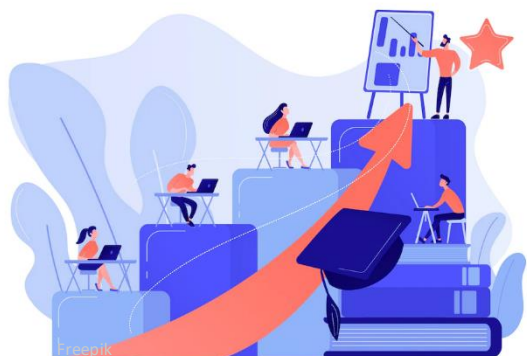
24th July 1000 - 1130hrs

Skills for Life include Maths, English and Digital Skills. Holding these skills is crucial for all staff, both for confidence and career progression, and supports the everyday work of your colleagues. Book your place [here](#).

Transformation leadership session

5th July 1830 - 2100hrs

Please find below invites to the South West Primary Care Academy upcoming educational sessions on [Transformational Leadership](#)



PHYSICIAN ASSOCIATES (PA)

PA Apprenticeship

Since April the PA apprentice role has been included within the ARRS. HEIs are currently in varying stages of developing programmes, and the list of current providers can be seen [here](#).

Resources are available [here](#), along with an [FAQ](#) for the role.

Additional Funding available to support PA apprenticeships

Closing date 14th July

Funding is being made available to support any PCNs or practices who would like to offer a Physician Associate (PA) apprenticeship starting in 2023/4.

If you want to know more about how a PA could enhance the skills within your multi-disciplinary team, then please see the Training Hub website or contact bswicb.traininghub@nhs.net for further information.

Employers should submit their expressions of interest via this [national online survey](#).

PA Webinar

13th July 2023 1300 - 1400hrs

An online webinar for employers to learn more about the role of Physician Associates in Primary Care. The webinar will be hosted by Abel Getachew PA-R, Physician Associate Ambassador for the SW.

Preceptorship Resources and Information

NHSA pay a £5,000 preceptorship allowance paid to employers to support the supervision and educational needs for newly qualified PAs working in primary care as part of the nationally agreed funding model introduced in 2018.

For more information on the criteria and application process, please click [here](#).

FOCUS ON Mental Health in Primary Care

Lead within the training hub is Leanndra Aitken



1 in 4 people will experience some form of mental health problem each year in the UK which routinely presents to general practice. It is recognised that mental health is a complex area of care and to optimise care, specialist mental health practitioners (MHPs) are better equipped to manage such presentations. BSW is seeing an increase in the number of MHPs working in within general practice in one of two models:

1. directly recruited by a GP practice.
2. via the ARRS (additional roles reimbursement scheme).

Leanndra has been focusing on the support and development needs for MHPs in primary care. She facilitates a peer supervision group that runs monthly for all MHPs across BSW working in primary care. This is an opportunity to learn, share and discuss in a safe space. She has been looking at training needs of the MHPs and is currently working on a plan to address the gaps.

Leanndra has been working with UWE on a pilot project for mental health student nurse placements within general practice which is currently not a placement option for this cohort. It is hoped that this will go live later this year with 3 Gp practices agreeing to host as part of this initial pilot. The aim is to evaluate the project and roll out on a larger scale if successful.

If you would like to know more about MHPs in primary care or what the training hub can offer, then please make contact.

Virtual MDT Clinical Supervision Programme

19th and 26th September 0900 - 1200hrs

This programme aims to introduce some of the additional roles in primary care, including what skills they have to offer the primary care workforce by equipping Supervisors with the skills to be confident in clinical supervision of other health professionals in the Primary Care setting.

There will be an opportunity to hear from practitioners already working within the primary care setting about their day-to-day work, as well as an over-view of their training, competencies and clinical supervision needed. Practical steps regarding how to supervise the clinical work of other health professionals will be discussed, including how their work may be structured and what their competency frameworks are. There will be a focus on learning styles and feedback models and how these can impact clinical supervision. Communication tools such as SBAR and RSVP that can be utilised to facilitate effective communication between healthcare professionals will be discussed.

To register your interest for this event, please complete the MS Form by clicking on the link below. Please ensure that you have completed the [registration form](#) by Tuesday 15th August.

Population Health Management and Health Inequalities Masterclass

19th July 1000 - 1130hrs

- Understand the meaning, and content of population health approaches in the context of system or ICS
- Identify local, regional, and national opportunities for improving population health and evidence-based approaches
- Understand the role of system to challenge their approach toward population health.

[Click here for more information](#)

Strategic Workforce Planning and Population Health Management

12th or 20th July 1000 - 1130hrs

- Understand the impact of strategic workforce planning in tackling health inequalities
- Ensure participants/workforce have the skills and leadership that meet their population health needs
- Improve understanding of population health management information

[Click here for more information](#)



Embedding Population Health Management Day-to-Day

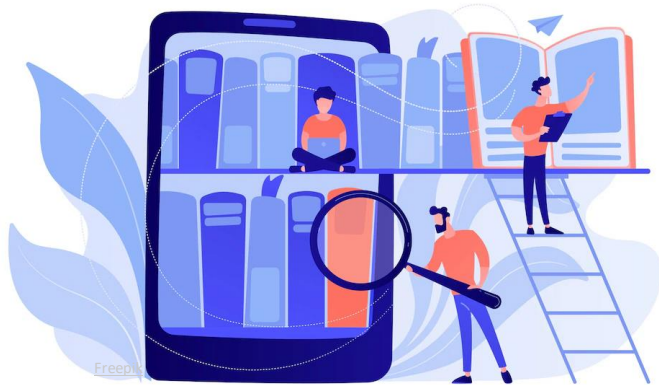
13th July 1000 - 1130hrs

- Learn about the core PHM capabilities – Infrastructure, Intelligence, Interventions, and Incentives – to support maturity in line with the PHM Maturity Matrix
- Behaviour science approach addressing health inequalities and patient and public involvement
- Tackling digital poverty, fuel poverty, language barriers and health inequalities in access health service

[Click here for more information](#)

Knowledge and Library Services

Please see the flyer which summarises the knowledge and library services available to all members of the primary care team: [HEE_GP-PracticeTeam_Digital_FlyerFINAL.pdf](#)



Are you struggling with SystemOne?

Anyone working in BSW can register. Once logged in just need to select “The learning hub” and “SystemOne”. You will be presented with the online courses which are broken into bite-sized chunks.

Online training courses can be found here <https://training.scwcsu.nhs.uk/>.



PERSONALISED CARE

Coffee + Connect

An opportunity to network with colleagues in the same role or working in the same locality. The next Coffee + Connect is organised by roles, the following one will be organised by locality.

Care Coordinators Coffee + Connect: Monday 10 July 12.30- 13.30

Health and Wellbeing Coaches Coffee + Connect: Monday 17 July 12.30- 13.30

Team Leader and Managers Coffee + Connect: Monday 17 July 14.30- 15.30

Social Prescribers Coffee + Connect: Monday 7 August 13.00-14.00

If you haven't receive an invite and would like to attend please contact veronica.kuperman1@nhs.net

Team on TEAMS

A new team on TEAMS has been set up to bring together Personalised Care colleagues. If you are not a member yet and would like to be included please contact veronica.kuperman1@nhs.net

Induction and Information sessions

The Training Hub Personalised Care Lead is now offering induction and information sessions for new and existing Personalised Care colleagues and managers.

The next available slots are:

Monday 7 August 11.00
 Monday 7 August 12.00
 Monday 21 August 11.00
 Monday 21 August 12.00

Please email veronica.kuperman1@nhs.net to book.

The NHS Leadership Academy

A number of training, development and coaching opportunities available.

For further information please see their latest bulletin, found [here](#).



New Clinical skills training offer for community pharmacists

HEE are making available 10,000 module places which will be delivered by CliniSkills until March 2024. This training will give community pharmacists the opportunity to build on their existing clinical examination and consultation skills to assess, treat and manage common health problems. This offer is available to community pharmacists, including part-time staff and locums working in community pharmacy

The Care Certificate for non-registered staff

A short animation has also been published, explaining what the Care Certificate is, who it is for and why it is so important – watch it now to learn how the Care Certificate is used by health and care professionals across the country.

Practice Nurses now included in BSW Primary Care Flexible Staff Pool

The option for practices to start posting vacant Practice Nurse shifts on Lantum is now live. Practice Managers can register for a Lantum account by sending an email to Rachel Cooke, Project Lead - Primary Care Flexible Staff Pool, at rachelj.cooke@nhs.net.

Practice Nurses wishing to join the pool can find out more online.

GPintheCloud - remote locum GP pilot

Lantum and GPintheCloud (GPitC) have teamed up to enable your practice to book remote locum GPs leading to greater workforce resilience. More information about the pilot is available online.

To get set up and start posting remote sessions please email Rachel Cooke, Project Lead, Primary Care Flexible Staff Pool, at rachelj.cooke@nhs.net.

Even if you already use Lantum for booking face to face GP locums, you still need to be set up to enable the remote session function so please contact Rachel.



e-GP eLearning sessions for General Practice

There are 4 updated sessions in the Being a General Practitioner course and other updates can be found in the following courses:

- The GP Consultation in Practice
- The GP Consultation in Practice: Evidence-Based Practice
- Patient Safety and Quality of Care
- Supporting Carers in General Practice
- Care of Acutely Ill People
- Care of Children and Young People: Children
- Women's Health: Care of Women
- Women's Health: Conception and Pregnancy
- Care of People with Eye Problems
- Care of People with Musculoskeletal Problems

For more information and to access the revised resources, please visit the e-GP programme page.

Training in Administrative Triage/Signposting

E-learning for Healthcare (e-LfH) is a programme that was developed by Health Education England, working in partnership with the NHS and professional bodies, which aims to support patient care by providing e-learning to educate and train the health and social care workforce.

There is a wide number of courses available, but a more recent course is aimed at supporting administrative staff to signpost patients effectively, and in this regard it may be useful for practices developing their Improving Access plans.

Any new user has first to register on the site - <https://www.e-lfh.org.uk/> The module 'Administrative triage using digital tools in General Practice' and it consists of nine modules:

1. Introduction to administrative triage
2. Workflow and setting up a triage list
3. Promotion and remote working
4. Taking a patient through an online consultation
5. Sorting and signposting
6. Effective communication techniques
7. Spotting and responding promptly to red flags
8. Maintaining patient confidentiality and privacy for patients and their carers and ensuring digital inclusion
9. Alerts and codes for reporting



Statutory training in Learning Disability and Autism

In July 2022, the Health and Care Act introduced a requirement for health and social care employees to receive training on learning disabilities and autism. All staff working for healthcare organisations in BSW that are CQC-regulated (which therefore includes primary care) will have to undertake training in these topics at a level appropriate to their role. The full detail should be known by this summer, although it is understood that organisations will have three years to become compliant.

We have been informed by NHSE that the Oliver McGowan training is highly likely to be seen as a minimum requirement within this code. With funding from NHSE, the BSW Academy has been working with BSW partners and national teams to develop the training model for our area. This uses a team of trainers and experts with lived-experience of autism and learning disabilities who will co-deliver the training across each of our localities.

To find out more about Oliver's story, click [here](#). For those practices that wish to avail themselves of the offer of this fully-funded training, primary care staff within the BSW area are now able to register to book the [Oliver McGowan tier 2 face-to-face sessions](#). Please see booking flowchart, [here](#). Once booked onto a session, staff will need to complete the [e-learning for health module](#).

If you have any questions please contact Sarah Morrissey, BSW Project Implementation Lead sarah.morrissey4@nhs.net or Vanessa Ongley, BSW Academy Learning Pillar Lead v.ongley@nhs.net

Survey for practices using Lantum

We are interested in learning if you believe the Flexible Staff Pool in partnership with Lantum has been beneficial for your practice. To help us understand your experience, we would appreciate it if you could complete the following [online survey](#) by Friday 14 July.

Your feedback is important to us for planning the future of this service, and we thank you for taking the time to complete this survey.

For queries, please contact Rachel Cooke, Project Lead, BSW Primary Care Flexible Staff Pool, at rachelj.cooke@nhs.net.



Visa Sponsorship Licences

Looking to employ another GP?

Over half of the doctors in GP training are international medical graduates, who are critical to General Practice. Given the length of GP training, these doctors are typically not eligible for indefinite leave to remain when they qualify and must be employed by a practice with a visa sponsorship licence to continue working in the UK.

In BSW many of the international graduates completing their GP training would like to stay in the area and are looking for employment.

Did you know that you can help support them into employment with your organisation by becoming a visa sponsor? To do this you need to [apply to hold a visa sponsorship licence](#) which is valid for 4 years. You can find further information [here](#).

How the BSW Training Hub can help you:

- The Training Hub are looking at ways to support you in this application - please contact rachelj.cooke@nhs.net.
- You can access dedicated support from one of our friendly and experienced BSW practice managers for advice regarding the application process – please contact rachelj.cooke@nhs.net to arrange.
- We are very keen to link doctors seeking a sponsoring practice to organisations who may be looking to recruit - please let rachelj.cooke@nhs.net know if you are already a visa sponsoring practice, or if you would like to be.
- You can also contact Dr Liz Alden, Swindon patch GP Associate Dean & BSW Training Hub GP Lead elizabeth.alden@hee.nhs.uk



Training Hub lead areas



Liz Alden

Clinical Lead



Leandra Aitken

Mental Health
Lead



Rachel Cooke

Project Lead –
Primary Care
Flexible Staff Pool



Kyra Crossley

Business Admin
Apprentice



Helen Edwards

Business Support
Officer



Hilary Fairfield

Training and
Development
Manager



Tina Fear

Nursing Lead



Kevin Foreman

Lead for apprentice-
ships, AHPs and
Advanced Practice



Veronica Kuperman

Personalised Care
Lead



Jim Petter

Paramedic
Lead



Jo Sinclair

GP NQF and
Retention
Lead



Will Wallage

Clinical Lead



Di Walsh

Programme
Lead

Website: www.bswtraininghub.nhs.uk

Email: Bswicb.traininghub@nhs.net

Facebook: [@BSWGeneralPracticeJobs.nhs.uk](https://www.facebook.com/BSWGeneralPracticeJobs.nhs.uk)

[@BSWTrainingHub](https://www.facebook.com/BSWTrainingHub)

Twitter: [@BSWJobs](https://twitter.com/BSWJobs)

[@BSWTrainingHub](https://twitter.com/BSWTrainingHub)